

Deltek Acumen 6.0

Release Notes

December 8, 2014

While Deltek has attempted to verify that the information in this document is accurate and complete, some typographical or technical errors may exist. The recipient of this document is solely responsible for all decisions relating to or use of the information provided herein.

The information contained in this publication is effective as of the publication date below and is subject to change without notice.

This publication contains proprietary information that is protected by copyright. All rights are reserved. No part of this document may be reproduced or transmitted in any form or by any means, electronic or mechanical, or translated into another language, without the prior written consent of Deltek, Inc.

This edition published December 2014.

© 2014 Deltek, Inc.

Deltek's software is also protected by copyright law and constitutes valuable confidential and proprietary information of Deltek, Inc. and its licensors. The Deltek software, and all related documentation, is provided for use only in accordance with the terms of the license agreement. Unauthorized reproduction or distribution of the program or any portion thereof could result in severe civil or criminal penalties.

All trademarks are the property of their respective owners.

Contents

- Overview 1
- For Additional Information 2
 - Customer Care Connect Site 2
 - Available Documentation for this Release 2
- New Features and Enhancements 4
 - Determine the Most Common Critical Paths in a Schedule 4
 - Import Safran Project 5 Files 5
 - Import and Compare Risk Register Owner and Consensus Values 5
 - Save and Import Custom Field Mapping Templates 5
 - Forensic Analysis Variance 6
 - Convert Summary Relationships 6
 - Add User-Defined Fields in the Risk Register 7
 - Support for Input and Calculations in Hours 7
 - Display Project Details in the Details Pane 7
 - Customize the Get External Data From Group 8
 - Use Logic Trace on the S2 // Logic Tab 8
 - API Enhancements 8
- Software Issues Resolved 9
 - Oracle Primavera 9
 - UN/CEFACT 9
 - Microsoft Project 10
 - Phoenix Project Manager 10
 - Open Plan 11
 - Ares PRISM 11
 - API 11
 - General 11

Overview

Welcome to Deltek Acumen 6.0 Release Notes. These release notes contain a summary of the following:

- [New Features and Enhancements](#)
- [Software Issues Resolved](#)



For system requirements and the Compatibility Matrix, see the Deltek Acumen Technical Installation Guide.

For Additional Information

Customer Care Connect Site

The Deltek Customer Care Connect site is a support Web site for Deltek customers who purchase an Ongoing Support Plan (OSP).

The following are some of the many options that the Customer Care Connect site provides:

- Download the latest versions of your Deltek products
- Search Deltek’s knowledge base
- Display or download product information, such as release notes, user guides, technical information, and white papers
- Submit a support case and check on its progress
- Transfer requested files to a Customer Care analyst
- Use Quick Chat to submit a question to a Customer Care analyst online
- Ask questions, exchange ideas, and share knowledge with other Deltek customers through the Deltek Connect Customer Forums
- Subscribe to Deltek communications about your products and services
- Receive alerts of new Deltek releases and hot fixes



For more information regarding Deltek Customer Care Connect, refer to the online help available from the Web site.

Access Customer Care Connect

To access the Customer Care Connect site, complete the following steps:

1. Go to <http://support.deltek.com>.
2. Enter your Customer Care Connect **Username** and Password.
3. Click Log In.



If you forget your username or password, you can click the **Account Assistance** button on the login screen for help.

Available Documentation for this Release

The following table lists the Deltek documentation available for this release. Except where noted, all the user guides and quick reference guides listed in this table are available for download from the Deltek Customer Care Connect site.

Document Name	Description
Deltek Acumen User Guide	This document includes information for navigating, and steps for using, the Acumen suite of products.
Deltek Acumen Technical	This guide contains technical installation and setup information

Document Name	Description
Installation Guide	for the staff at your company who maintain the hardware and software required to install Deltek Acumen.
Deltek Acumen API Guide	This guide provides information about the Deltek Acumen API and how to integrate with different platforms to create custom reports.
Deltek Acumen Metric Developers Guide	This document is a reference and guide for Acumen Software users looking to develop and customize advanced metrics within Acumen.
Deltek Acumen RiskBook	This document includes information for setting up and using RiskBook. Most of this information is also included in the User Guide.
Deltek Acumen Historical Release Notes	This document includes information about features and resolved issues from previous releases.

New Features and Enhancements

This section includes summaries of the new features and enhancements included in this release.

Determine the Most Common Critical Paths in a Schedule

When you run risk analysis and include uncertainties and risk events, each simulation may have a different critical path. Activities that are critical in your deterministic schedule may not be the same as those identified in the statistical model.

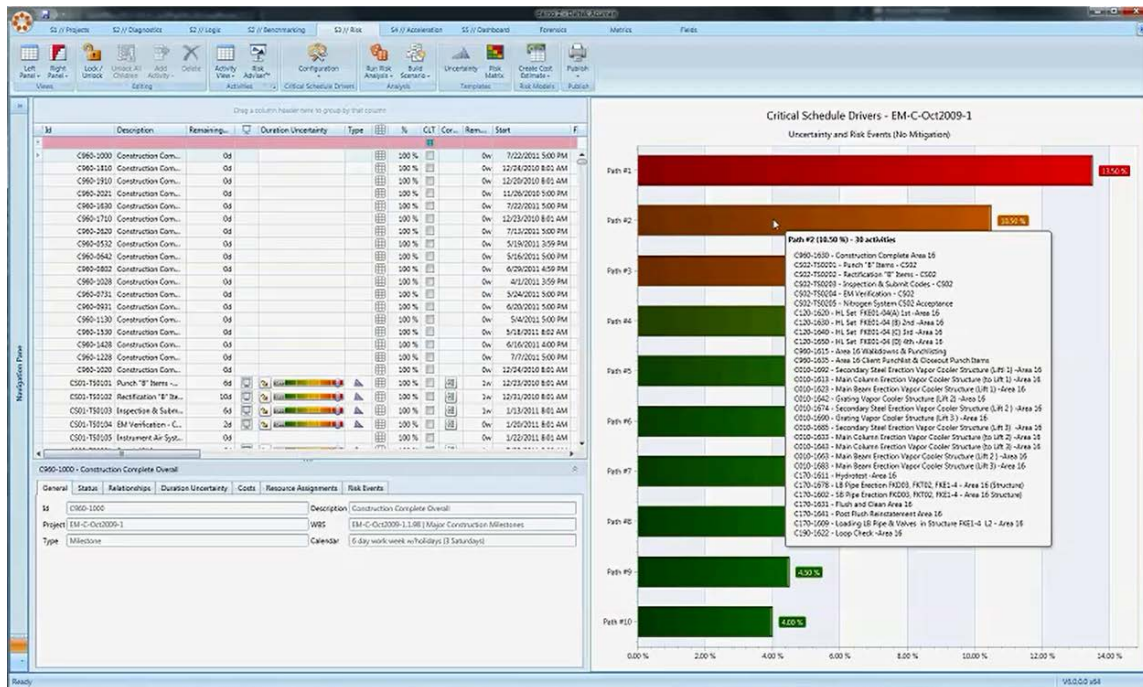
Instead of looking at the critical path on the activity level, you can run simulations on the entire project. Each time a simulation is run, Acumen notes the critical path. As you run more and more simulations, some of the paths get repeated and those most common critical paths are the ones you may want to see.

Acumen now uses a Critical Schedule Driver tornado chart to display the most common critical paths. The percentage that displays to the right of each bar is how often, as a percentage, the path is most critical. For example, if you run 200 iterations and the Path 1 bar displays a percentage of 13%, it means that Path 1 was the critical path in 26 (13%) of the 200 iterations.

If you hover over a bar, you can see the list of activities that make up that path. You can create a SmartGantt filter using this information and use it to view the activities and make any needed adjustments.

Example of a Critical Schedule Driver Tornado Chart

This example shows a list of the critical paths, listed from most common to least common. The activities that make up the second most common path are displayed.



See *Determining the Most Common Critical Paths in a Schedule* in the “Risk Register” topic of the Acumen User Guide for more information.

Import Safran Project 5 Files

Acumen now links to Safran Project 5 through exported Safran Project (*.SP) files. You can link to, and import from, a Safran Project file without having Safran Project installed on your PC.



- See **Safran Project** in the *Linking and Importing Projects* section of the Acumen User Guide for information about importing Safran activities with constraints.
 - See **Appendix A: External Data Sources** in the Acumen User Guide for information specific to Safran.
 - See **Appendix B: Standard Field Mappings** in the Acumen User Guide for Safran standard field mappings.
-

Import and Compare Risk Register Owner and Consensus Values

When you import a risk register from RiskBook into Acumen, you can now import the owners values or the consensus values.

The owner is the person who created the risk. The owner may not be the same person for all risks listed in a risk register. For example, Risk 1 may have been created by John and Risk 2 may have been created by Sam. The owner's values are the values for probability schedule and cost impact that the owner entered for the risk.

The consensus values are the average values of all the votes cast in RiskBook for probability schedule and cost impact for the selected risk register.



See **Import a Risk Register from RiskBook** in the *Risk Register* section of the Acumen User Guide for more information.

Use Acumen to Compare Owner and Consensus Results

You can now use risk comparison to compare what the owner thinks about the risks to what the rest of the team thinks. In order to do so, you must run risk analysis twice; once with the owner results and once with the consensus results.



See **Compare Owner and Consensus Results** in the *Risk Register* section of the Acumen User Guide for more information.

Save and Import Custom Field Mapping Templates

Acumen now allows you to save and import custom mapping templates. When you complete field mapping on the Fields tab, you can save it as an XML mapping template. You can import a saved template back into field mapping and apply it to a single project or all projects.



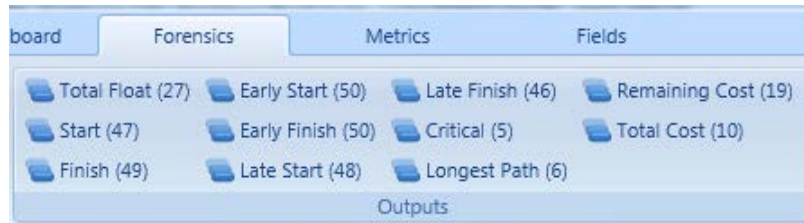
See *Field Mapping Templates* in the "Fields tab" topic of the Acumen User Guide for additional information.

Forensic Analysis Variance

Forensic Analysis Fields Display Number of Variances

After running a forensic analysis, each field listed in the ribbon area of the Forensics tab now displays a number in parenthesis. This indicates the number of variances relating to that specific analysis. For example, if the Outputs group displays **Total Float (27)**, that means that there are twenty-seven total float variances between the projects that were analyzed. You can click on the field to view variance details in the pane below.

Example of Number of Variances Indicated Next To Each Field



Hide Forensic Analysis Fields With No Variance

You can now hide all forensic analysis fields in the ribbon area of the Forensics tab that have no variance. This allows you to more easily see those areas with variance. This option is available on the User Interface tab of the Deltek Acumen Options dialog box.



See *Hide Forensic Analysis Fields With No Variance* in the "Using Forensics to Identify Additions, Deletions, and Modifications" topic of the Acumen User Guide for steps.

Convert Summary Relationships

Convert Summary Relationships into Non-Summary Activity Relationships with a Minimal Set of Links

The Links on Summaries feature in the Schedule Cleanser has been enhanced to be more efficient when converting summary relationships.

- If the predecessor is a summary, then:
 1. Acumen searches within the WBS in which the summary predecessor is located for activities that have no successors within that WBS.
 2. The same type of relationships between these group of activities and the successor activity of the original link are created.
 3. The original link is removed.
- If the successor is a summary, then:
 1. Acumen searches within the WBS in which the summary successor is located for activities that have no predecessors within that WBS.
 2. The same type of relationships between these group of activities and the predecessor activity of the original link are created.
 3. The original link is removed.

- If both the predecessor and successor are summaries, then the above steps are combined.



If a relationship of the same type is already being created, then the existing relationship is kept and its lag is updated if the newer lag is bigger.



See *Cleanse and Resolve Flaws in a Schedule* in the “Using the Acumen Dashboard” topic of the Acumen User Guide for additional information.

Add User-Defined Fields in the Risk Register

You can now add up to 10 user-defined fields to the risk register. For example, if you have a risk event relating to a possible strike, you may want to add an email field that contains the Human Resources manager’s email address. These user-defined fields are included when you import/export the risk register.



See *Using User-Defined Fields in the Risk Register* in the “Risk Register” topic of the Acumen User Guide for additional information.

Support for Input and Calculations in Hours

When your Display Settings **Duration Time Unit** field is set to hours, you can now enter risk duration, duration uncertainty, and risk register mappings in hours. In addition, risk analysis can now calculate impact in hours.

Risk Register Import/Export Activity Durations Now Support Hours

When Acumen imports or exports a risk register, the activity duration field units now display in the unit that you have set in the Display Settings **Duration Time Unit** field. For example, if your **Duration Time Unit** field is set to **Hours** and you import a risk register with activity duration fields in days, Acumen will convert the activity duration fields to hours. Conversely, if your **Duration Time Unit** field is set to days, and the spreadsheet you are importing displays duration fields in hours, Acumen will convert the fields to display in days.



See *Import and Export Risk Registers* in the “Risk Register” topic of the Acumen User Guide for more information.

Display Project Details in the Details Pane

In addition to activity and WBS information, you can now view project details on the S1 // Projects tab Details pane. For example, the Settings tab displays float type, scheduling mode, and critical activity definition. In order to view these fields, you must select a project in the top pane.

If you accelerate the project by clicking **Accelerate Schedule** in the Scenario Generation group, an Acceleration tab is added to the Details pane that includes information about the script used, targeted goal, total acceleration, and a graphical representation of how the acceleration changes the project dates.

Customize the Get External Data From Group

You can add or remove icons in the Get External Data From group so that you only see the import types that you need. In addition to being able to do this on the User Interface tab of the Deltek Acumen Options dialog box, you can now also do it when you first access Acumen:

- When you access Acumen for the first time, after accepting the license agreement, an External Tools for Acumen dialog box displays.
 - Click on a tool name to select or deselect it. If you deselect it, the tool icon will not display in the Get External Data From group.



See *Customize the Get External Data From Group* in the “Viewing and Editing the Schedule” topic of the Acumen User Guide for more information.

Use Logic Trace on the S2 // Logic Tab

In addition to running it from the S2 // Diagnostics tab, you can now run Logic Trace on the S2 // Logic tab.

The Logic Trace feature includes:

- Tracing modes:
 - **Trace Forward** — Trace logic forward starting from the selected activity.
 - **Trace Backward** — Trace logic backward starting from the selected activity.
 - **Trace Forward / Backward** — Trace logic forward and backward starting from the selected activity.
 - **Trace Path** — This traces the paths between any two given activities. That is, it traces the logic from a starting activity until reaching the finishing activity.
- Activity Grouping — Group by WBS or fields.
- SmartGantt features — This includes top and bottom bar options.
- SmartGantt filters — Create and save SmartGantt filters.

You can view the logic trace options in one of two ways:

- Click the **Logic Analysis » Logic Trace** drop-down arrow to view the menu options.
- Right-click on an activity to view the tracing mode options.



See *Using Logic Trace* in the “Logic Analysis” topic of the Acumen User Guide for detailed information about this feature.

API Enhancements

Exporting Dates

All dates are now exported using the ISO-8601 standard. The exported date format will always be in the following format: **YYYY-MM-DDTHH:MM:SS**.

Exporting Colors

All colors are now exported using a HEX format. For example, **<Color>#FF008000</Color>**.

Software Issues Resolved

Oracle Primavera

Deltek Defect Tracking No.	Description
3931	P6 web import read the wrong project during import if there was another project with a similar name.
4032	P3 import did not process finish milestone activities.
3911	P6 XML import did not calculate project budget cost.
3913	P6 web import did not import the WBS codes.
3889	P6 XML import did not process resource assignments correctly when the costs were specified in scientific notation.
3904	P6 export crashed when you tried to re-import an exported project.
3856	P6 export did not specify the name separator character which resulted in a comma being used by default.
3857	P6 export defined calendars as global instead of project calendars.
3870	P6 export did not export the correct default calendar for the project.
3875	P6 export did not modify the name of the project being exported.
3851	When you exported a scenario to Primavera P6 XER, resource remaining values for completed activities were not exported correctly.
2748	Acumen crashed when you exported a Primavera P6 XML file as Microsoft Project XML.
2538	All activity variances options were disabled when you exported a UNCEFACT project from Primavera P6 Web Services.
3615	The password textbox border was missing in the Add profile dialog box for Oracle Primavera P6 Web Services when you logged in to Window Server 2008 via RDP.

UN/CEFACT

Deltek Defect Tracking No.	Description
2409	UNCEFACT calendars did not import working shifts.
2924	An exception error displayed when you exported the UNCEFACT project

- created from Open Plan and added the project to Forensics as a snapshot.
- 2761 UNCEFACT export did not display a "processing" message during export.
- 2407 UN/CEFACT export did not export any dates, including project dates.
- 2495 Baseline start/finish dates did not display correctly in Forensics for UNCEFACT.
- 2497 Orphan summary activities were created and top summary Activity ID displayed GUID when you imported a UNCEFACT project that was previously exported.

Microsoft Project

Deltek Defect Tracking No.	Description
4006	MSP (interop) import on Windows 8 crashed when the region was English (South Africa).
3531	Some links did not get exported when you exported a cleansed scenario to a Microsoft Project MPP format.
2945	Microsoft Project native import failed when you imported a code field that had a NULL description.
3751	A "Problem trying to communicate with MSP" error message displayed when you exported a scenario as Microsoft Project MPP via interop import.
3767	No confirmation message or option to add the exported project to Forensics was displayed when you exported a scenario as Microsoft Project MPP.
2866	The Resource ID#1 Name displayed blank in the XML File Viewer when you exported an MSP project as UN/CEFACT.
2921	The "Value cannot be null" error message displayed when you exported an MSP project as UNCEFACT.
2927	The MSP toolbar installer was missing the Application Files folder.

Phoenix Project Manager

Deltek Defect Tracking No.	Description
2661	Activities ID displayed GUID when exporting Phoenix Project Manager to UNCEFACT.

Open Plan

Deltek Defect Tracking No.	Description
3731	An exception error displayed and Acumen crashed when you selected any cell in the Fields tab when the project did not exist in Open Plan.
3482	A non-fatal exception error displayed when re-importing an Open Plan project that contained a user field that no longer existed in Open Plan.
3547	Open Plan import did not always close the COM connection to Open Plan until you closed Acumen.
2923	Open Plan import was extremely slow at importing code fields and their values.
3538	Open Plan code field names imported as C1 , C2 which caused metrics to fail when code field definitions were set to ID .

Ares PRISM

Deltek Defect Tracking No.	Description
2853	"Export to UNCEFACT" was enabled for ARES PRISM G2 Spreadsheet report.

API


Deltek Defect Tracking No.	Description
3540	API relationship did not export GUID's correctly.
3542	API export did not use the ISO format for all dates.
3544	API export for metric colors was not consistent (RGB in Ribbon Views, HEX in Metric Library).

General

Deltek Defect Tracking No.	Description
3679	Risk Register Import did not process mappings correctly when the workbook duration unit was set to Hours .
2896	The Risk Matrix icon was not updated when you imported the Risk Register to RiskBook and selected Yes in Keep Current Mappings .
3708	There were unexpected results when user-defined fields or codes were

- compared with "empty" using metric filters.
- 2173 An exception error displayed after you renamed the user-defined fields.
- 3686 Activities were not set as "Driving" when the Predecessors/Successors calendars were different.
- 3850 Acumen failed to start when the current culture used the UmAlQura (Saudi Arabia) calendar (bug in Aspose.Tasks).
- 3709 Metrics with empty formulas (and marked as "advanced") attempted to evaluate the formula instead of only using the filters.
- 3628 An exception error displayed and Acumen crashed when you clicked the **Check Formula** button for a formula that used **SUM((<field>=""*1)**.
Note: <field> represents a cell in the Excel A1 notation.
- 3624 On the Metrics tab, the metric containing the **SUM((<field>=""*1)** formula broke the analysis and some of the metrics didn't get calculated.
Note: <field> represents a cell in the Excel A1 notation.
- 2931 On the Metrics tab, the values in quotes in the formula needed to be the full version of the field value, including spaces and punctuation.
- 2850 A deleted snapshot/scenario was not removed from the Diagnostics view in the project mode until you refreshed.
- 3740 The metrics deleted in the Metrics tab were not removed in the Diagnostics view.
- 3525 The current activity lag display value did not refresh in activity details while switching between duration units.
- 4042 The activity grid on the S3 // Risk tab did not refresh properly when you added a new activity.
- 2865 The Activity grid did not refresh correctly when you deleted a scenario/snapshot.
- 2952 The Uncertainty sliders were reset to **Off** and the Risk Exposure histogram was not displayed for group rows when you re-opened the workbook grouped by fields.
- 2954 The Uncertainty sliders were reset to **Off** and the Risk Exposure histogram was not displayed for group rows, when you switched out of the risk view and the .NET garbage collector ran.
- 3527 Probabilities were able to go over 100% for risk mappings.
- 3718 A non-secure function was used to get temporary file names.
See <http://cwe.mitre.org/data/definitions/377.html> for more information.

- 2938 The Ribbon Analyzer did not display any values when you drilled down past WBS Level 1.
- 2940 Filtering down using double-click did not work when you grouped ribbons by WBS.
- 3772 Fuse Analysis hung when you selected the Risk Exposure tab.
- 3763 A "Value cannot be null" error displayed when you selected any cell in the Fields tab when the source project was not available.
- 3977 When no project was selected, an "InvalidOperationException" error displayed when you dragged and dropped a source field.
- 4028 The inter-project relationships did not display activity IDs in the Relationship Details tab.
- 4005 An exception error displayed when the region was set to English (South Africa) and you attempted to import from Primavera Risk Analysis.
- 2858 <LimitDateTime> did not display in the exported file for constraints.
- 4034 Acceleration slider did not work correctly in the Schedule Acceleration window.
- 2915 The Schedule Contribution tornado displayed black bars going from zero to zero when all values were rounded down to zero.
- 3574 A non-fatal exception displayed when running Risk Analysis.
- 2491 The search filter did not work correctly when activities were grouped.
- 3578 When you tried to open a workbook without saving the one you were already working on, Acumen opened a blank workbook.
- 2920 Acumen displayed an option to save as an XML workbook in the **File » Save As » Save as type** dropdown list.
- 3853 Acumen displayed a fatal exception error when the current culture could not be found in the list of available cultures for .NET.
- 3758 The status of the Project view project checkbox was not saved when you saved the workbook.



Deltek is the leading global provider of enterprise software and information solutions for professional services firms, government contractors, and government agencies. For decades, we have delivered actionable insight that empowers our customers to unlock their business potential. Over 14,000 organizations and 1.8 million users in approximately 80 countries around the world rely on Deltek to research and identify opportunities, win new business, optimize resource, streamline operations, and deliver more profitable projects. Deltek – Know more. Do more.®

deltek.com