

# Deltek Acumen 6.0

## Quick Start Guide

**December 8, 2014**

While Deltek has attempted to verify that the information in this document is accurate and complete, some typographical or technical errors may exist. The recipient of this document is solely responsible for all decisions relating to or use of the information provided herein.

The information contained in this publication is effective as of the publication date below and is subject to change without notice.

This publication contains proprietary information that is protected by copyright. All rights are reserved. No part of this document may be reproduced or transmitted in any form or by any means, electronic or mechanical, or translated into another language, without the prior written consent of Deltek, Inc.

This edition published December 2014.

© 2014 Deltek, Inc.

Deltek's software is also protected by copyright law and constitutes valuable confidential and proprietary information of Deltek, Inc. and its licensors. The Deltek software, and all related documentation, is provided for use only in accordance with the terms of the license agreement. Unauthorized reproduction or distribution of the program or any portion thereof could result in severe civil or criminal penalties.

All trademarks are the property of their respective owners.

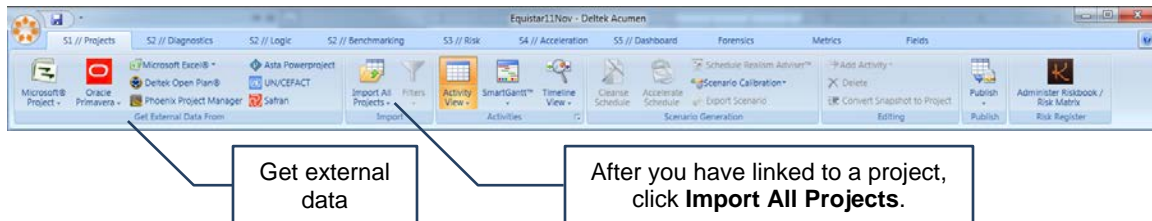
# Contents

- Deltek Acumen Fuse Quick Start Guide..... 1
  - Import Schedule or Cost Data..... 1
  - Set Up and Run Analysis ..... 1
  - Run Logic Integrity Checks ..... 2
  - Get a High Level Overview ..... 2
  - Compare Differences and Pinpoint Changes..... 3
  - Create and Edit Metrics..... 4
- Deltek Acumen Risk Quick Start Guide..... 5
  - Import Schedule or Cost Data..... 5
  - Apply Uncertainty ..... 5
  - Add Risk Events ..... 6
  - Run Risk Analysis ..... 6
  - View the Risk Exposure Report ..... 6
  - View the Risk Drivers Report ..... 7

# Deltek Acumen Fuse Quick Start Guide

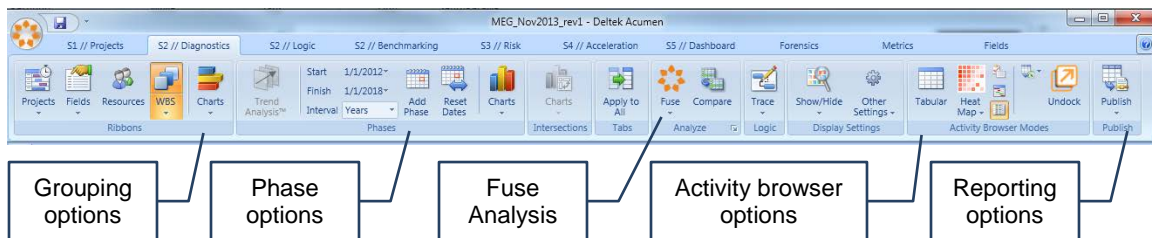
## Import Schedule or Cost Data

On the S1 // Projects tab, use the Get External Data menu to set up the Acumen workbook by linking to single or multiple schedules, cost estimates, or risk models. You can import baseline schedules or project snapshots as well.



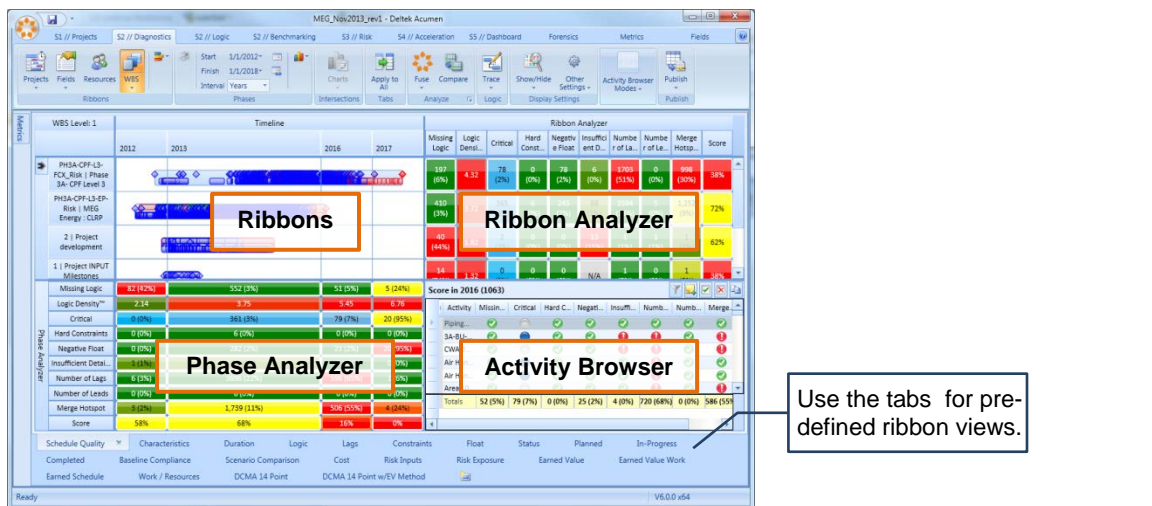
## Set Up and Run Analysis

On the S2 // Diagnostics tab, set up your analysis by selecting the grouping and time phases you want to see. In the Analyze menu, click **Fuse** to run the analysis. Change the activity browser view or publish the results to a report.



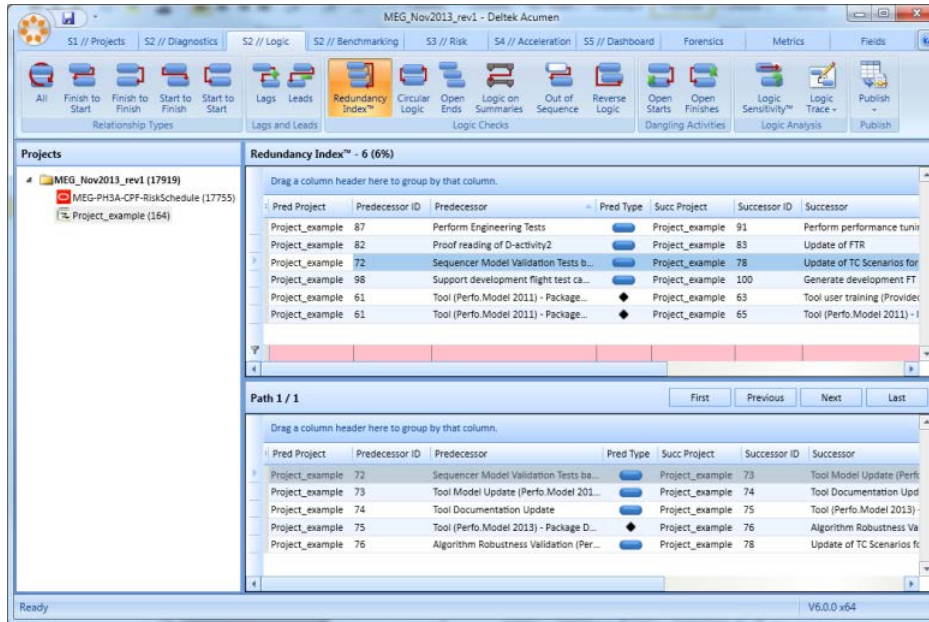
## Metric Analysis

- Ribbon Analyzer — View metric results for individual activity groupings.
- Phase Analyzer — View metric results for individual time phases.
- Activity Browser — View the activities included in a ribbon, phase, or metric result.



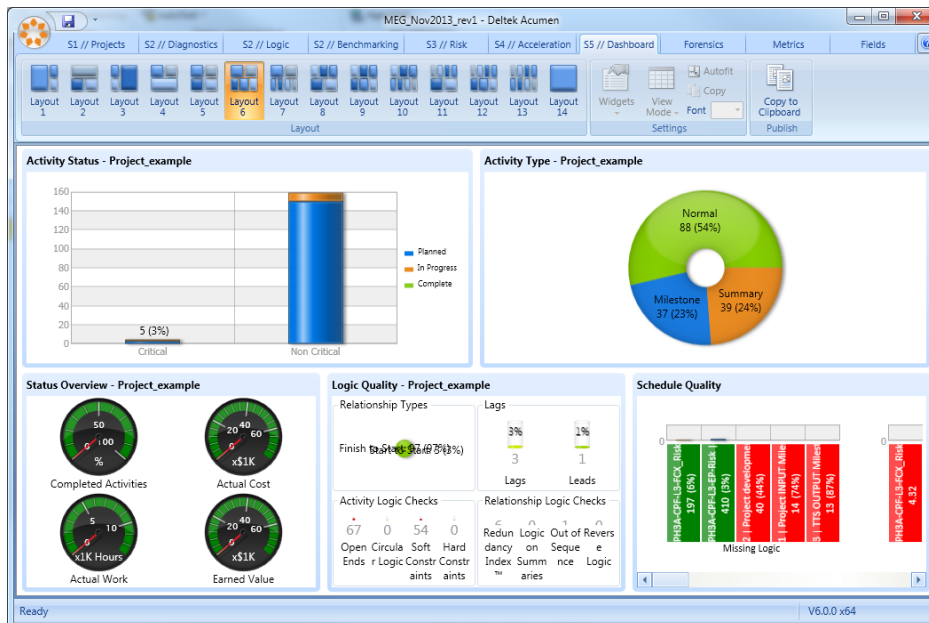
## Run Logic Integrity Checks

Use the S2 // Logic tab to identify open ends, leads, lags, out of sequence activities, reverse logic, redundant logic, and circular logic. Group results by dragging a column heading to the top or select a column heading by which to sort results.



## Get a High Level Overview

Use the S5 // Dashboard tab to get a high level overview of project status and quality. Click on an image to view the driving activities or additional information.

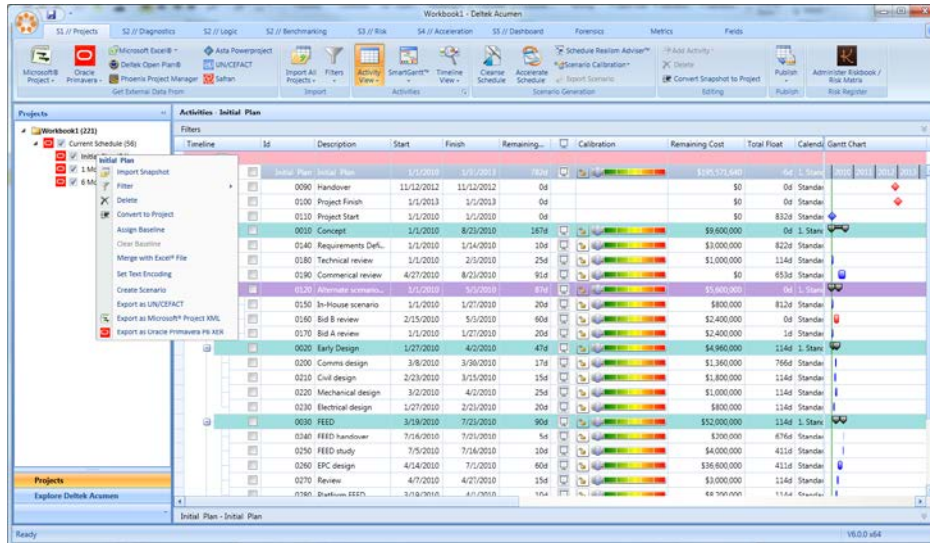


## Compare Differences and Pinpoint Changes

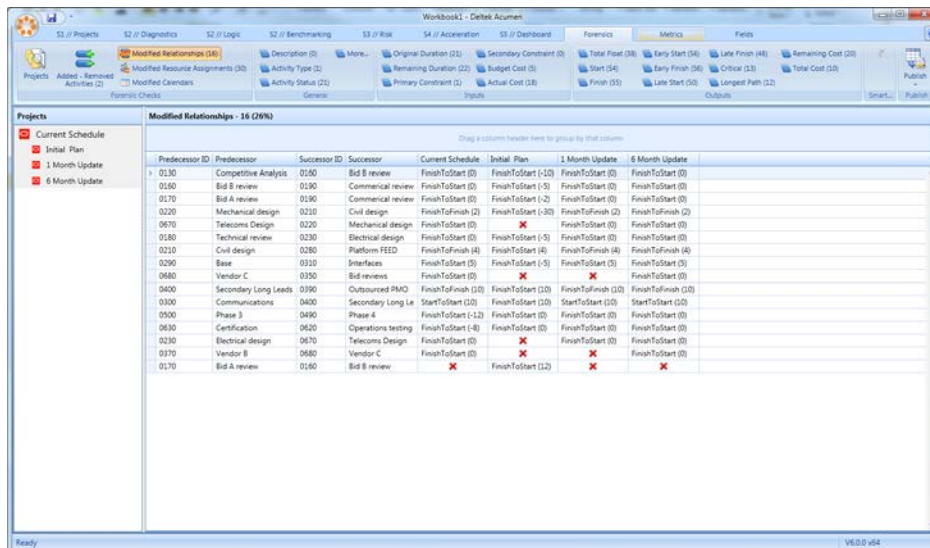
Before using the Forensics tab, you must load project snapshots to compare against one another. On the S1 // Projects tab, select the project to which you want to compare. With the project highlighted, use the Get External Data menu or right-click and select **New Snapshot** to add a snapshot for comparison. Once you have loaded all of your snapshots, click the Forensics tab to view variances between them.

Use the Forensics tab menu items to select attributes for Acumen's variance analysis. Publish this view to Excel for a project forensics report. Drag column headings to the top to group results or select a column heading by which to sort results.

1. Load project snapshots.



2. Compare variances.



## Create and Edit Metrics

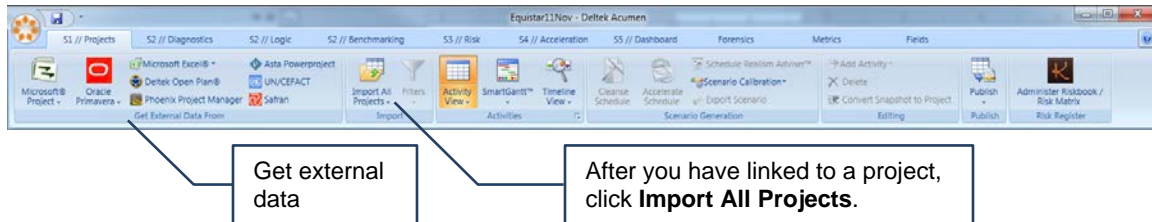
Use the Metrics tab to create new metrics and edit existing ones. Filter the activities you want included in each metric by activity status, type, or time period, then click **Add** button to add additional filters and criteria to the metric. Drop-down menus in each Filters column allow you to choose activity fields and functions such as greater than, equal to, less than, and so on.

The screenshot shows the 'Metrics' tab in the Deltek Acumen software. The interface includes a ribbon with various toolbars, a left-hand navigation pane, and a central workspace for editing a metric. The metric being edited is named 'Open Ends'. The workspace is divided into several sections: 'Inclusions' (Activity Status, Activity Type, Time Phase), 'Filters' (a table for adding criteria), and 'Formula' (a text area for the metric's calculation). Callouts with numbered boxes point to specific elements: 1. 'Type in value or select field.' points to the 'Field or Value' column in the Filters table. 2. 'Select function.' points to the 'Op' column in the Filters table. 3. 'Select field.' points to the 'Field' column in the Filters table. 4. 'Add metric criteria.' points to the 'Add' button in the Filters section. 5. 'Select activity filters.' points to the 'Inclusions' section, specifically the 'Activity Status' and 'Activity Type' filters.

# Deltek Acumen Risk Quick Start Guide

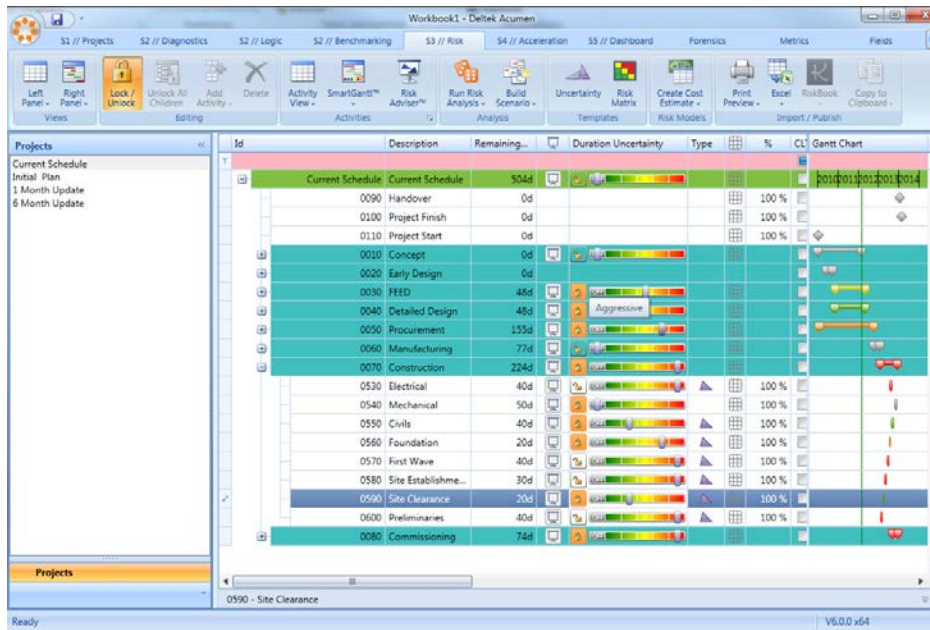
## Import Schedule or Cost Data

On the S1 // Projects tab, use the Get External Data menu to link to a single project or multiple projects.



## Apply Uncertainty

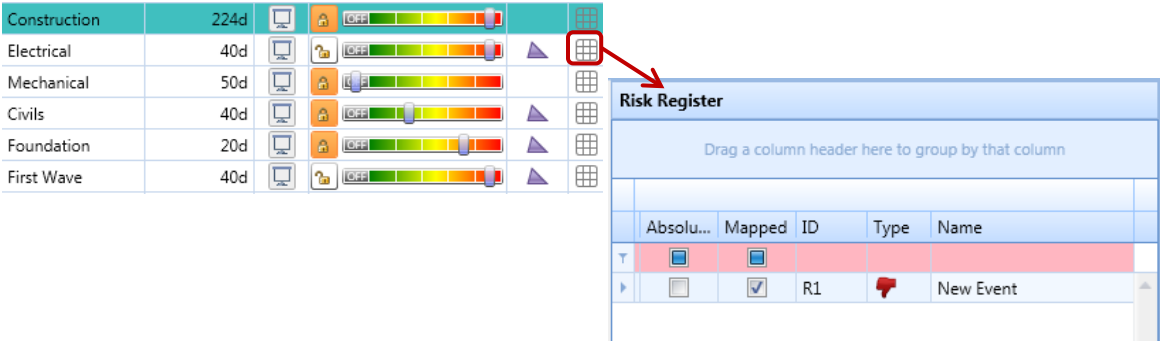
Use the Duration Uncertainty sliders on the S3 // Risk tab to apply duration or cost uncertainty to a single activity or groups of activities. Move the slider left (more conservative) or right (more aggressive) at any hierarchical level. The assignments automatically cascade down to any children.





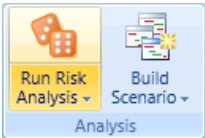
### Add Risk Events

Click the matrix icon to the right of the sliders to add a new risk event. The event is mapped automatically to the selected activity or group of activities.



### Run Risk Analysis

When you're satisfied with your risk and uncertainty loading, on the S3 // Risk tab, in the Analysis menu, click the **Run Risk Analysis** down-arrow to select the risk analysis/scenario that you want to run.

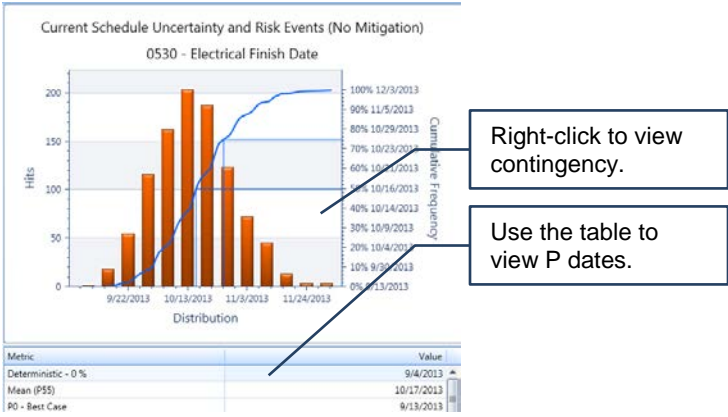


Risk analysis options include:

- Uncertainty Only (no risk events)
- Uncertainty and Risk Events (no mitigation)
- Uncertainty and Risk Events (mitigated, excluding overhead)
- Uncertainty and Risk Events (mitigated, including overhead)

### View the Risk Exposure Report

After running the risk analysis, your results are displayed in a histogram in the right panel. Right-click on any confidence level to view contingency. View probabilistic dates in the histogram and chart.



## View the Risk Drivers Report

On the S3 // Risks tab, in the View menu, click **Right Panel » Risk Drivers** to view schedule and cost risk drivers. Using the Acumen Risk Contribution Factor™, find out how much impact activities and risk events have on any given milestone or group of activities.


Show risk drivers using the Right Panel menu.

Adjust the level of detail in the report with the slider.

View impact from uncertainty, logic, and risk.

The key shows which risk events are driving.

Activity	Logic	Uncertainty	R2: Strike	R1: Hurricane	R3: Material Shortage	Total
0530 - Electrical	0d	7d	1d	0d	0d	8d
0580 - Site Establishment	0d	6d	1d	0d	0d	7d
0600 - Preliminaries	0d	6d	1d	0d	0d	7d
0570 - First Wave	0d	5d	1d	0d	0d	6d
0620 - Operations testing	2d	1d	2d	0d	0d	5d
0590 - Site Clearance	3d	0d	1d	0d	0d	4d
0610 - Certified	2d	0d	0d	0d	0d	2d
0640 - Third Party Validation	1d	1d	0d	0d	0d	2d
0650 - Internal Pre-Comms	1d	0d	0d	0d	0d	1d
0630 - Certification	0d	0d	0d	0d	0d	0d



Deltek is the leading global provider of enterprise software and information solutions for professional services firms, government contractors, and government agencies. For decades, we have delivered actionable insight that empowers our customers to unlock their business potential. Over 14,000 organizations and 1.8 million users in approximately 80 countries around the world rely on Deltek to research and identify opportunities, win new business, optimize resource, streamline operations, and deliver more profitable projects. Deltek – Know more. Do more.®

[deltek.com](http://deltek.com)